



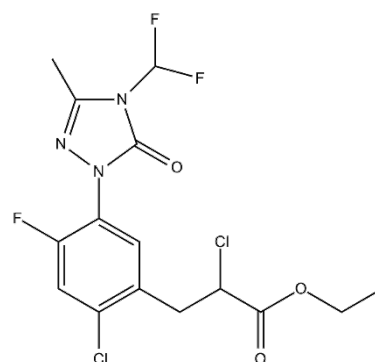
QuickSilver™

HERBICIDE

The Boss of Moss

QuickSilver Herbicide provides efficacious control of Silvery thread moss in turfgrass. The active ingredient, Carfentrazone-ethyl, has a contact mode of action providing fast visible symptoms with minimal residual resulting in short re-seed intervals (24 hours).

What's more, **QuickSilver** has been carefully formulated to be gentle on your high value turf and is safe to use at any point throughout the season. With a flexible use rate, it can easily be incorporated into any spray program enabling you to break the moss opportunity cycle.



Active Ingredient	Carfentrazone-ethyl 224 g/L
Herbicide Group	Group 14
Formulation	Emulsifiable Concentrate
Phytomobility	Contact
Package Size	4 x 237 ml

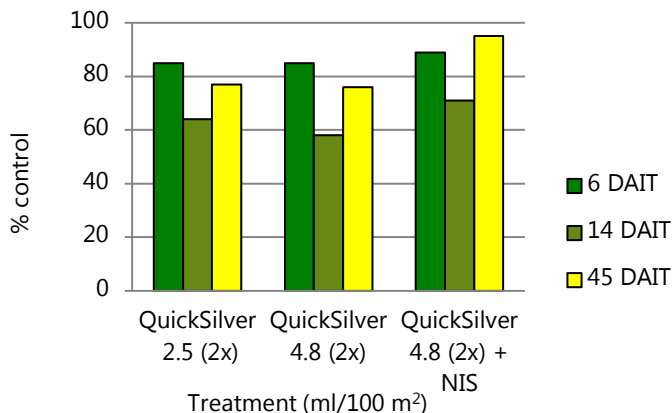
www.belchimturf.ca

Grover 647 225 8035 paul.grotier@belchim.com
 BJ 416 457 7785 billyjoe.carey@belchim.com
 Big Bear 519 820 8929 barry.johnson@belchim.com



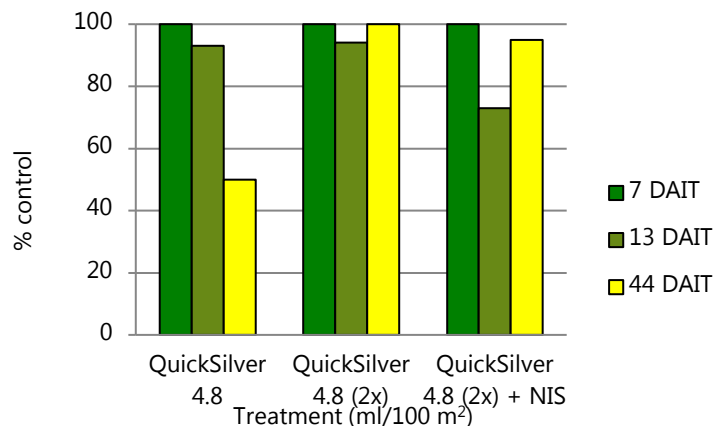
BELCHIM
TURF PROTECTION CANADA

Bentgrass Green



F. Yelverton, Ph.D. 2003, North Carolina State University
Initial applications made July 24; sequential August 6

Bentgrass Tee



F. Yelverton, Ph.D. 2005, North Carolina State University
Initial applications made July 12; sequential July 25

QuickSilver Application Information

Pest Controlled	Labelled Rate (/100 m ²)	App Interval (days)	Water Volume (/100 m ²)
Silvery thread moss (greens & tees)	1.46 – 4.9 ml	14	8 L

- Apply while turf and moss are actively growing to allow bentgrass encroachment upon the injured moss. Quicksilver is most effective when applied to photosynthesizing tissue, make sure moss is green (and hydrated)
- Under high pressure apply high label rate: 4.9 ml/100 m² for the initial two applications
- Maintenance applications: 1.46 to 2.45 ml/100 m². Research has shown good efficacy with biweekly applications of Quicksilver at 2.5 ml/100 m² throughout the growing season
- Product coverage is important as Quicksilver is a contact herbicide:
 - Apply with 8 L or water/100 m² (2gals/1000 ft²)
 - The inclusion of a non-ionic surfactant (NIS) at a rate of 0.25% v/v can boost efficacy (see above)

Cultural Management & Overseeding

- Proper cultural practices such as fertility, irrigation and mowing heights are essential in managing Silvery thread moss. Ideally, apply Quicksilver 7 days after cultural practices that manipulate the canopy and can spread moss (aerification, verticutting, etc.)
- Quicksilver can be applied to creeping bentgrass at 7 days or more after emergence
- Areas treated with Quicksilver may be seeded or over-seeded one day following application.
- Promote bentgrass populations by over-seeding after Quicksilver application.

QuickSilver Case Coverage

Labelled Rate (/100 m ²)	1 Jug (237 ml)	1 Case (4 x 237 ml)
2.45 ml	2.4 ac	9.6 ac
4.9 ml	1.2 ac	4.8 ac

Always read and follow label instructions
Quicksilver is a registered trademark of FMC Corporation

